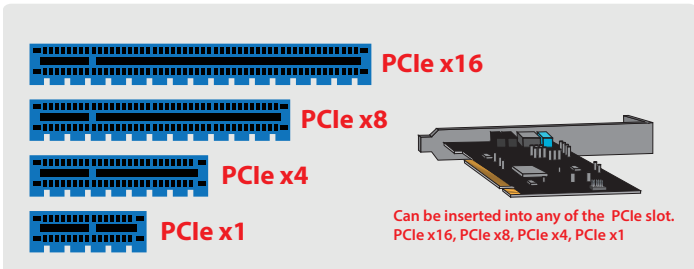


**1. Verify the package contents.**

Compruebe el contenido del paquete.  
Vérifiez le contenu du paquet d'emballage.  
Überprüfen Sie den Inhalt des Produktkartons.  
Verificare i contenuti della confezione.  
检查包装内物品。

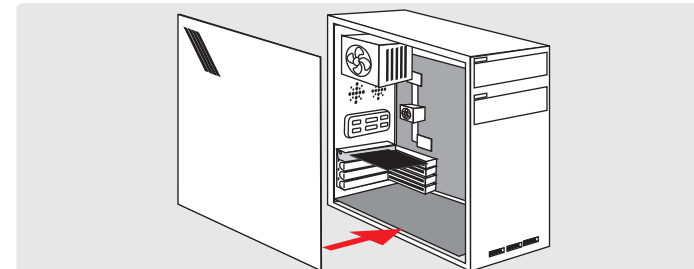
التحقق من محتويات العبوة.



**3. Locate a free expansion slot and remove the metal cover plate.**

Busque una ranura de expansión libre y retire la placa metálica de protección.  
Repérez une fente d'extension libre et retirez le couvercle en métal.  
Suchen Sie einen freien Erweiterungskartensteckplatz und entfernen Sie die Metallabdeckung.  
Individuare uno slot libero per l'espansione e rimuovere la piastra di copertura metallica.  
選定一個自由擴展插槽，移除金屬蓋板

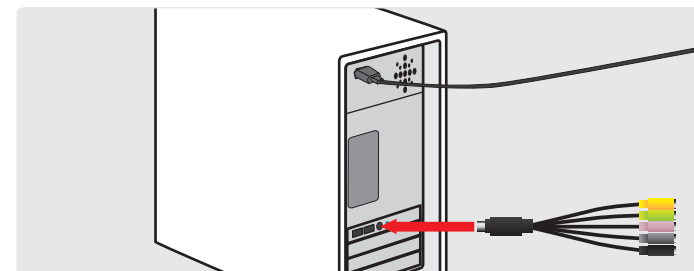
وضع فتحة توسعة حرة وإزالة لوحة الغطاء المعدنية.



**5. Place the case cover back on the computer.**

Vuelva a instalar la cubierta de la carcasa en el equipo.  
Réattachez le couvercle du boîtier en place au dos de l'ordinateur.  
Setzen Sie das Gehäuse wieder am Computer auf.  
Rimettere a posto il coperchio del case sul computer.  
装好机箱

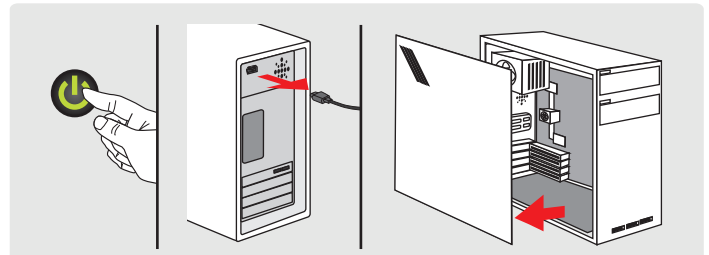
إعادة وضع غطاء الحاوية على جهاز الكمبيوتر.



**7. Attach the fan out cable to the back of the sound card.**

Conecte de nuevo el cable de alimentación y el resto de dispositivos al equipo.  
Réattachez le cordon d'alimentation et les autres appareils à l'ordinateur.  
Schließen Sie die Netzleitung und die anderen Geräte wieder an den Computer an.  
Ricollegare l'alimentazione e gli altri dispositivi al computer.  
重新连接电源和其他外设

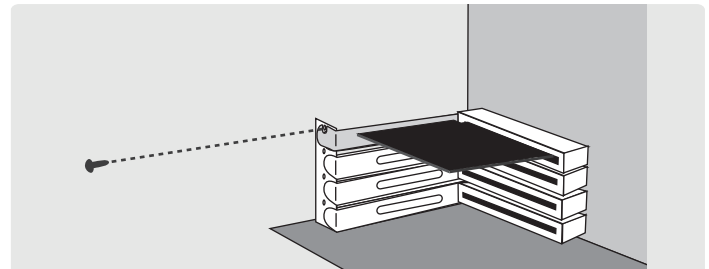
إعادة إرفاق أجهزة الطاقة والأجهزة الأخرى بجهاز الكمبيوتر.



**2. Turn off the computer, unplug the power cord and remove the cover of the computer.**

Apague el equipo y retire la cubierta del mismo.  
Éteignez l'ordinateur puis retirez-en le couvercle.  
Schalten Sie den Computer aus und nehmen Sie das Gehäuse vom Computer ab.  
Spegnere il computer e rimuovere il coperchio.  
关闭电脑，打开机箱

إيقاف تشغيل جهاز الكمبيوتر وفصل كبل الطاقة وإزالة الغطاء من الكمبيوتر.



**4. When installing the expansion card, be sure to fasten the bracket as documented in the computer case manufacturer's documentation.**

Durante la instalación de la tarjeta de expansión, asegúrese de sujetar la abrazadera siguiendo los pasos descritos en la documentación proporcionada por el fabricante de la carcasa del equipo.

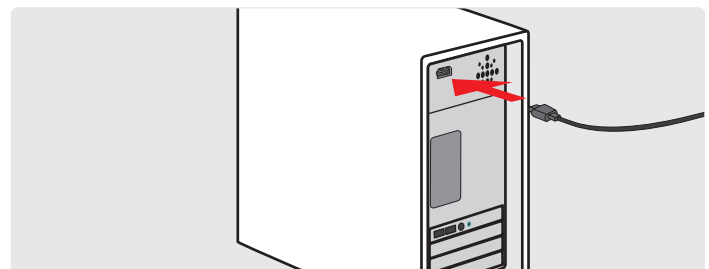
Lors de l'installation de la carte d'extension, assurez-vous de fixer les supports de la manière indiquée dans la notice du fabricant du boîtier de l'ordinateur.

Bei der Installation der Erweiterungskarte müssen Sie darauf achten, dass die Halterung so befestigt wird, wie in der Dokumentation des Hersteller des Computergehäuses beschrieben ist.

Installando la scheda di espansione, accertarsi che la staffa sia assicurata come documentato nel materiale informativo del case del computer.

安装扩展卡时，确保根据电脑机箱制造说明固定支架

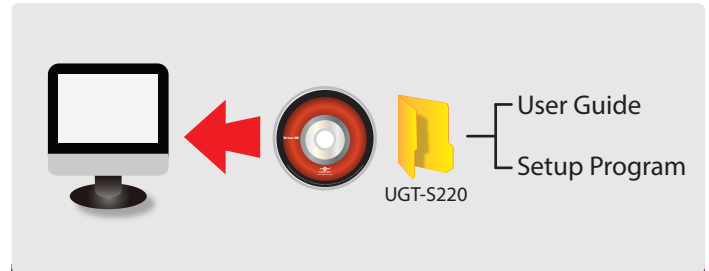
تثبيت بطاقة التوسعة كاستند في وثائق الجهة المصنعة للكمبيوتر.



**6. Reattach the power and other devices to the computer.**

Conecte de nuevo el cable de alimentación y el resto de dispositivos al equipo.  
Réattachez le cordon d'alimentation et les autres appareils à l'ordinateur.  
Schließen Sie die Netzleitung und die anderen Geräte wieder an den Computer an.  
Ricollegare l'alimentazione e gli altri dispositivi al computer.  
重新连接电源和其他外设

إعادة إرفاق أجهزة الطاقة والأجهزة الأخرى بجهاز الكمبيوتر.



**8. Once the computer is powered ON, proceed with installing the necessary setup program from the folder of the installation CD.**

Una vez encendido el equipo, instale los controladores necesarios.  
Une fois que l'ordinateur est activé, installez les drivers nécessaires.  
Sobald der Computer eingeschaltet ist, müssen Sie die erforderlichen Treiber installieren.  
Una volta acceso il computer, procedere con l'installazione dei driver necessari.  
开机后安装必要的驱动程序

الاستمرار في تثبيت المحركات الضرورية فور تشغيل جهاز الكمبيوتر.

### Description:

The Vantec 7.1 Channel PCIe Sound Card comes with a wealth of features like HD Audio, Extensive Audio format support and more. It is the easiest way to update your PCIe based system with the latest sound technology. Once installed, this card with all its assortment of audio inputs will allow you to enjoy all your movies and audio files to their fullest potential. Hear the difference with the Vantec 7.1 Channel PCIe Sound Card.

### Features:

- Compatible with PCI Express 1.1 interface with bus mastering and burst modes
- Build in HD Audio controller into CM8828 chipset
- Intel HD Audio Specification compatible
- Low Profile Bracket included
- Audio format supports 192K/176.4K/96K/88.2K/48K/44.1K and 16/24bits resolution
- Integrated 192K/176.4K/96K/88.2K/48K/44.1K, and 16/24-bit SPDIF transmitter/Receiver via optical port

### Specifications:

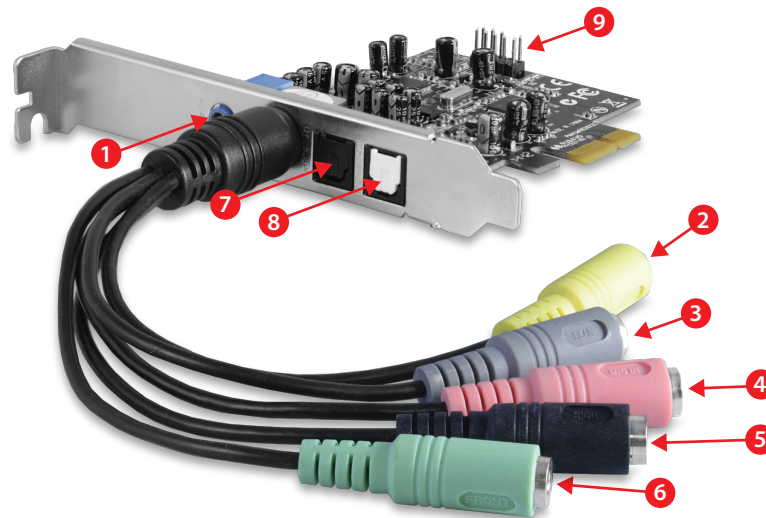
Model: UGT-S220  
 Bus: PCIe  
 Chipset: C-Media CM8828  
 Connectors: 1 x Line In /1 x Mic In /1 x Front Speaker /1 x Rear Speaker /1 x Center/Bass Speaker /1 x S/PDIF In (via optical) /1 x S/PDIF Out (via optical)  
 Dimension: 69 x 87 x 19mm

### System Requirements:

- Pentium-class computer with one available PCIe slot
- Windows® XP/2003/Vista/7/8/8.1 (32/64 bit)
- DirectX 8.1 above is required
- Support for Windows 10

### Package Contents:

- 7.1 Channel PCI Sound Card
- Driver CD
- Low profile bracket
- Mini-DIN to 3.5mm fan-out cable
- Quick Installation Guide



The rear panel of this 7.1 Channel PCIe Sound Card has the following jacks:

- |                                      |   |
|--------------------------------------|---|
| <b>1. Line In (blue):</b>            | Connect to tape/CD/DVD player, or other audio sources for output mixing and/or recording  |
| <b>2. Center Subwoofer (yellow):</b> | Connect to center/subwoofer speakers while 6/8 channel speaker mode is enabled (via external amplifier)   |
| <b>3. Rear-Speaker (gray):</b>       | Connect to rear speakers while 4/6/8 channel speaker mode is enabled (via external amplifier)   |
| <b>4. Mic In (pink):</b>             | Connect to microphone   |
| <b>5. Side-Speaker (black):</b>      | Connect to side speakers while 8 channel speaker mode is enabled (via external amplifier)   |
| <b>6. Front Out (green):</b>         | Connect to headphone or amplifying speakers   |
| <b>7. S/PDIF In:</b>                 | Connect to digital output of external audio device via an optional S/PDIF cable   |
| <b>8. S/PDIF Out:</b>                | Connect to digital input of external audio device via an optical S/PDIF cable   |
| <b>9. Front panel audio header:</b>  | intel HDA front-panel compatible and supports HP jack-detection and automatically switches audio output from the back panel to the front panel. Supports both front-panel and sound card Mic input mixing |

Port	2-Channel	4-Channel	6-Channel	8-Channel
Green	Line Out	Front Speaker	Front Speaker	Front Speaker
Gray	-	Rear Speaker	Rear Speaker	Rear Speaker
Yellow	-	-	Center/Subwoofer	Center/Subwoofer
Black	-	-	-	Side Speaker