

Thank You

For Choosing VantecUSA Product.

We are committed to providing you with the best service and support. If you have a problem with installing, getting the product to function or other product related question, please feel free to write to us. We will help you answer your question.

You can write to us at :

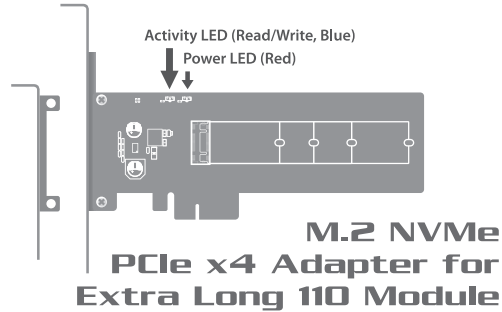
support@vantecusa.com

For the latest Drivers, Manual and Frequently Asked Questions (FAQ), they are available at our website at vantecusa.com or write to us.

Thank you,
VantecUSA Support Team.



Installation Guide



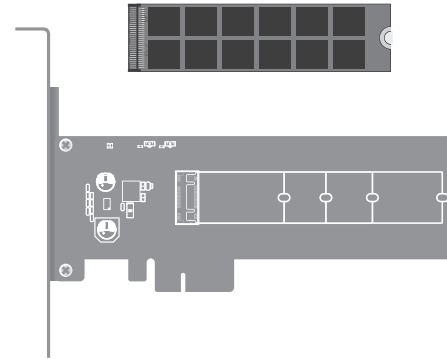
- + UGT-M2PC110 card
- + Standard (mounted) and Low profile bracket
- + Quick Install Guide
- + Screw x2 (for M.2)
- + Screw Nut x2 (for M.2)



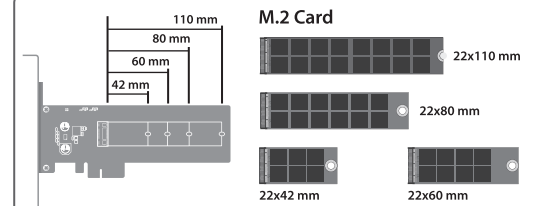
1. Verify the package contents.
Note: Only one screw and one screw nut are needed. The extras are spares.



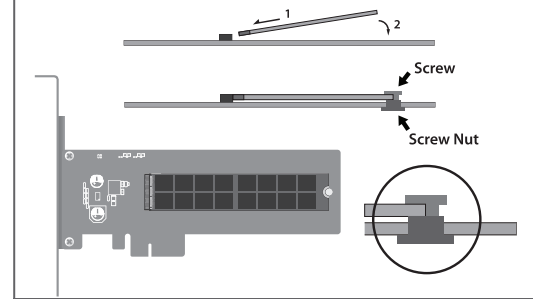
Your NVMe Module



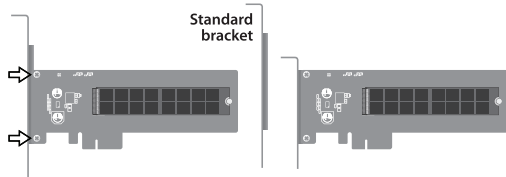
2. Before you unpack your NVMe module and take out the PCIe card, please be aware that these are sensitive devices and can be damaged by Static Electricity. Please ground yourself before handling them and hold it by the edge of the PCB and PCIe card.



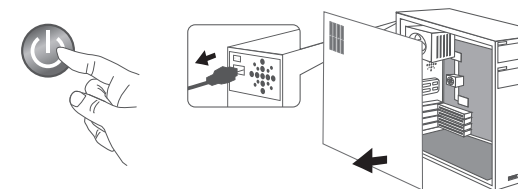
3. M.2 module comes in different length and sizes (42, 60, 80, or 110mm), match your M.2 module length to the hole alignment to decide which mounting hole to use.



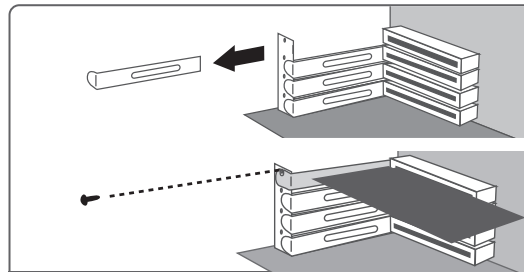
4. Attached the M.2 module by inserting the M.2 Card at an angle, push it down and secure with the Screw Nut from the bottom and the screw from the top down to hold the M.2 module in place.



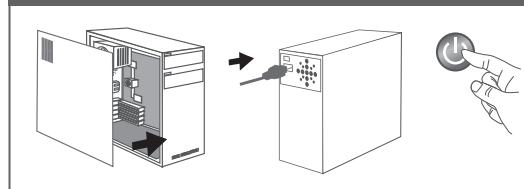
5. The PCIe Card is ready to be installed into your system.
If you are adding this card into a Slim or Low Profile System, please replace the standard bracket with a Low Profile Bracket provided. Remove the two screws holding the standard bracket and replace it with the Low Profile Bracket and secure back the two screws hold the bracket.



6. Turn off Computer System, unplug the computer power cord from the wall outlet and remove the cover of the Computer System.



7. Locate a free PCIe x4, x8 or x16 expansion slot and remove the plate covering the back aligned with the PCIe slot. Insert this new PCIe card into the PCIe slot, make sure the PCIe card contacts is totally inserted into the PCIe slot. Secure and fasten the PCIe card as documented in the Computer System manufacturer's documentation.



8. Place the case cover back on the Computer System. Reattached the power cord to Computer System, plug back to the wall outlet and power ON the System.



9. If you are planning to use the NVMe to boot and install the Operating System, follow the instructions that come with the NVMe Module. It may involve changing the CMOS (BIOS Setup) setting to enable booting from the NVMe module.

Note: All newer Storage need to be prep using Operating System tools to Initialize, Partition and Format the NVMe before use.

10. Preparing the newly installed M.2 NVMe for use:

All new USB storage device needs to be initialized, partition and formatted for the Operating System you are using before it can store data.

For the Windows Operating System, use Disk Management and for OS X, use Disk Utility.

For detail, instruction refers to the FAQ "How to preparing a New storage, Hard Drive, or SSD for use with a system" on our website support section at www.vantecusa.com

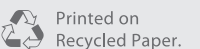
www.vantecusa.com

UGT-M2PC110

Information in this document is subject to change without notice. Reproduction of these materials in any manner whatsoever without written permission is strictly forbidden.



v1.01



Printed on Recycled Paper.
Copyright © 2019 Vantec Thermal Technologies. All Rights Reserved.
All Registered Trademarks Belong to Their Respective Companies.