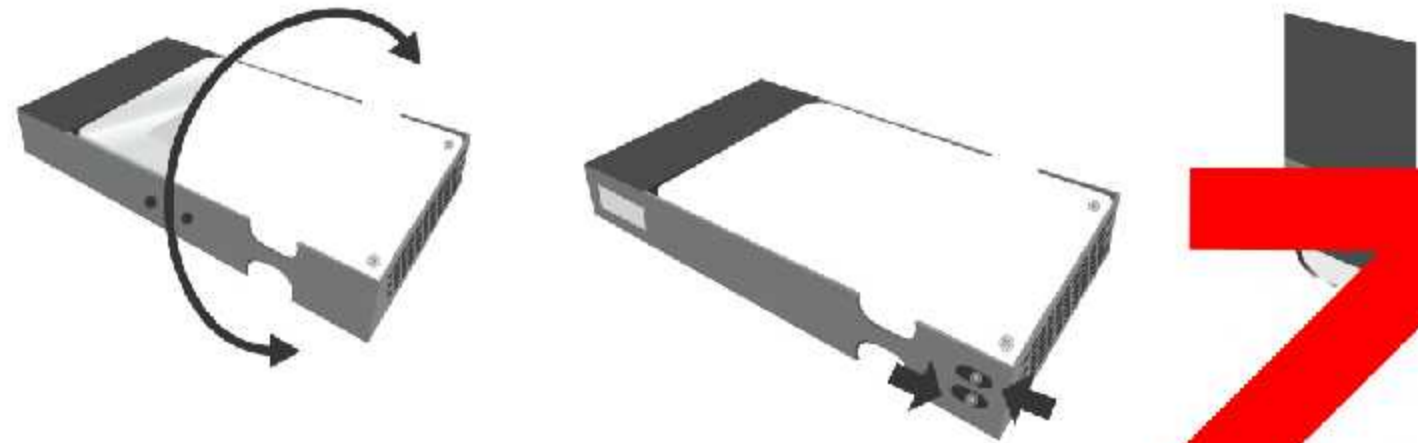


1. Verify the package contents.

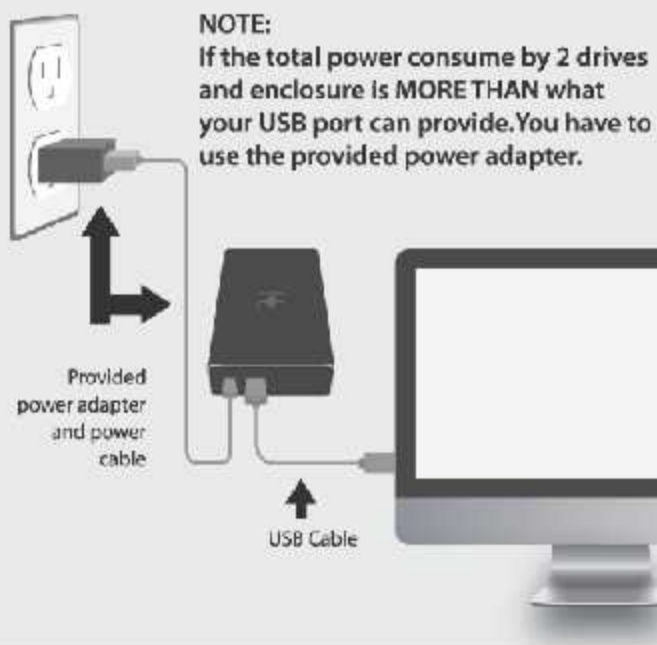
2. Remove the top cover of the enclosure.



4. If installing two drives, turn over the tray and insert the second drive using the same method mention in step#3. Secure the drive(s) using the provided screws.

5. Align the LED on the tray with the LED opening on the casing shown and slide the tray into the casing.

6. Secure the two screws to hold the tray and casing together. The enclosure is ready.



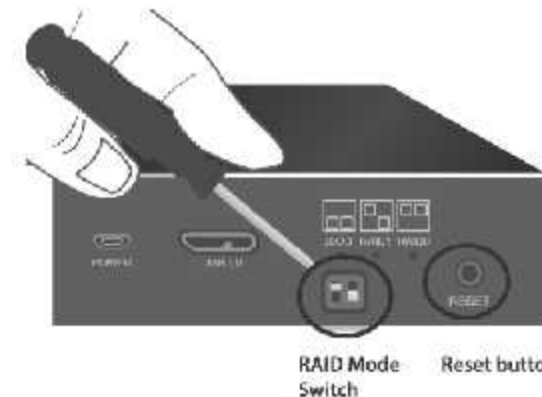
7. This enclosure can be powered with a power adapter OR bus-powered using USB port. It depend on the type of drives installed into the enclosure.



Mode Configuration:



NOTE: All data previously stored on the hard drive will be lost. please up all data to a separate storage before continuing



8. The next step is to setup the RAID mode or Normal (individual) mode of the storage unit. Refer to the switch setting for RAID or Normal mode of operation. Use a pen tip to set the dip switch to the desire mode.

- 1) Power Up unit
- 2) Wait for the drive to spin up speed.
- 3) Press and hold the reset button for 3 seconds (HDD LEDs will turn off)
- 4) Release the reset button and the built-in controller will activate the RAID or Normal Mode based on the dip switch setting.

- All new USB storage device need to be initialize, partition and formatted for the Operating System you are using before it can store data.
- For Windows Operating System, use Disk Management.
- For OS X, use Disk Utility to prepare this storage device.

For detail instruction refer to the FAQ "How to preparing a New storage, Hard Drive, or SSD for for use with a system?" on our website support section at WWW.VANTECUSA.COM

9. To Change and Set the RAID or Normal Mode, connect and power up the unit.

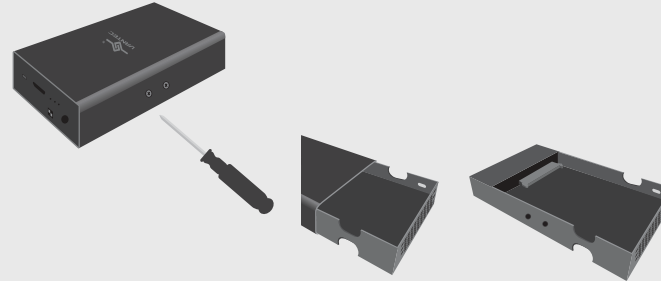
NOTE:

If you are not sure about your drive(s) power requirement, PLEASE USE the AC Adapter to prevent any connection issues, like drop connection, see only one drive, cannot format, cannot see second drive and more...

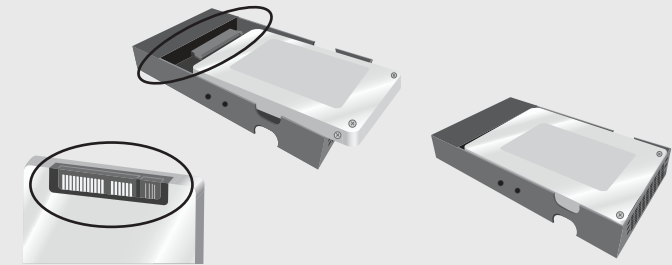


NOTE:
Customer purchase in different region may have ac adapter for their region.

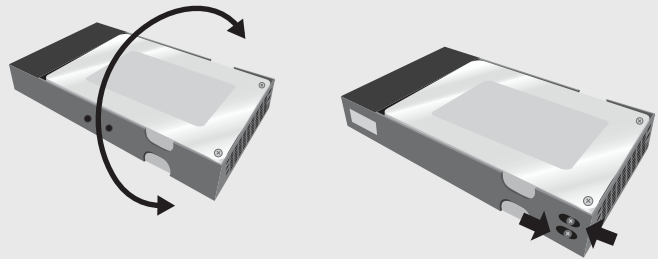
1. Verify the package contents.



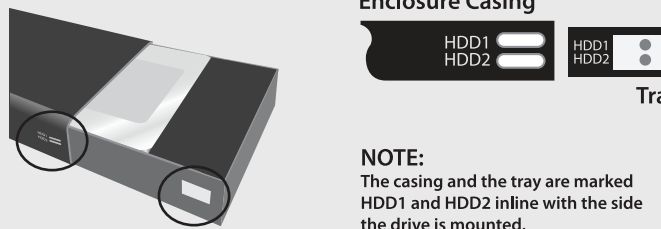
2. Remove the two screws holding the tray and slide the tray out.



3. Align the SATA interface on the drive to the interface on the tray and slide in and down. The drive should seat flat and the SATA interface fully mated together.



4. If installing two drives, turn over the tray and insert the second drive using the same method mention in step#3. Secure the drive(s) using the provided screws.



Enclosure Casing



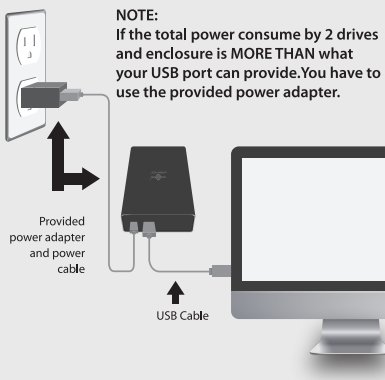
Tray

NOTE:
The casing and the tray are marked HDD1 and HDD2 inline with the side the drive is mounted.

5. Align the LED on the tray with the LED opening on the casing shown and slide the tray into the casing.



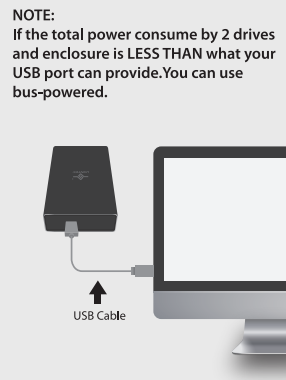
6. Secure the two screws to hold the tray and casing together. The enclosure is ready.



NOTE:
If the total power consume by 2 drives and enclosure is MORE THAN what your USB port can provide. You have to use the provided power adapter.

Provided power adapter and power cable

USB Cable



NOTE:
If the total power consume by 2 drives and enclosure is LESS THAN what your USB port can provide. You can use bus-powered.

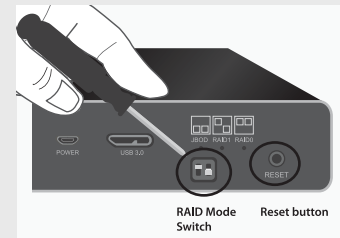
USB Cable

7. This enclosure can be powered with a power adapter OR bus-powered using USB port. It depend on the type of drives installed into the enclosure.

Mode Configuration:



NOTE:
All data previously stored on the hard drive will be lost. please up all data to a separate storage before continuing



RAID Mode Switch Reset button

8. The next step is to setup the RAID mode or Normal (individual) mode of the storage unit. Refer to the switch setting for RAID or Normal mode of operation. Use a pen tip to set the dip switch to the desire mode.

- 1) Power Up unit
- 2) Wait for the drive to spin up speed.
- 3) Press and hold the reset button for 3 seconds (HDD LEDs will turn off)
- 4) Release the reset button and the built-in controller will activate the RAID or Normal Mode based on the dip switch setting.

- All new USB storage device need to be initialize, partition and formatted for the Operating System you are using before it can store data.
- For Windows Operating System, use Disk Management.
- For OS X, use Disk Utility to prepare this storage device.

For detail instruction refer to the FAQ "How to preparing a New storage, Hard Drive, or SSD for for use with a system?" on our website support section at WWW.VANTECUSA.COM

9. To Change and Set the RAID or Normal Mode, connect and power up the unit.